

The first initiative for the JR group!

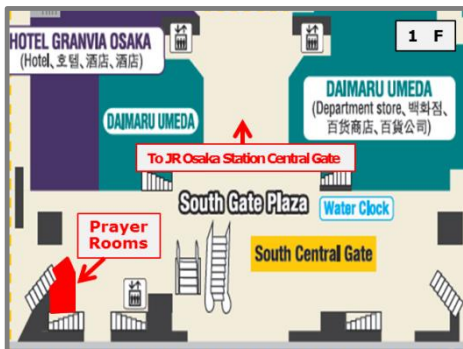
We operate Prayer Rooms in “Osaka Station City.”

Osaka Terminal Building Co., Ltd.

Our OSAKA STATION CITY (JR Osaka Station) has had initiatives intended for foreigners visiting Japan, such as upgrading of international visitor-directed Wi-Fi spots. Now we are operating “Prayer Rooms,” the first of its kind in the JR group, in “South Gate Plaza” directly connected to JR Osaka Station, and we operate the Prayer Rooms as a facility which, regardless of religion, anyone can enjoy using.

<<Facility outline>>

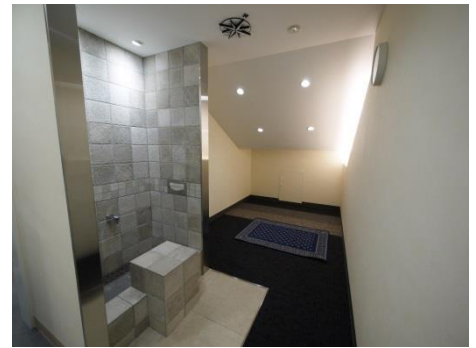
1. Operating hours: 10:00 to 18:00 (Last entry 17:30)
2. Location: “South Gate Plaza” on the 1st floor of South Gate Building (directly connected to JR Osaka Station)
*** Please come to “Osaka Station City 3F Information” (“OSC Information”) on the third floor before using. An OSC Information attendant will show you to the rooms.**
3. Facility outline: we will provide separate prayer rooms for men and women, and will set up in each room a “Wudu Place” where one cleans her/his body before prayer and worship. Regardless of religion, anyone can enjoy using.



Prayer room location diagram



Prayer room exterior



Prayer room interior

In addition to this, the Osaka Station City has had the following initiatives for international passengers visiting Japan.

Matter	Initiatives
Tax-free counter/shop	• LUCUA OSAKA (more than 190 shops), Daimaru Umeda (the 2 nd basement)
Facility-/equipment-related	• Mobile router rental (chargeable) at “OSC Information” • The setting up of the foreigner-oriented Wi-Fi spots “JR-WEST Free Wi-Fi” (each ticket gate in Osaka Station, “OSC Information,” “Toki-no-hiroba Plaza,” “South Gate Plaza,” “Carillon Plaza,” “Atrium Plaza”)

[Inquiries]

OSAKA STATION CITY 3F Information TEL 06-6458-0212 (10:00~18:00)